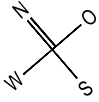
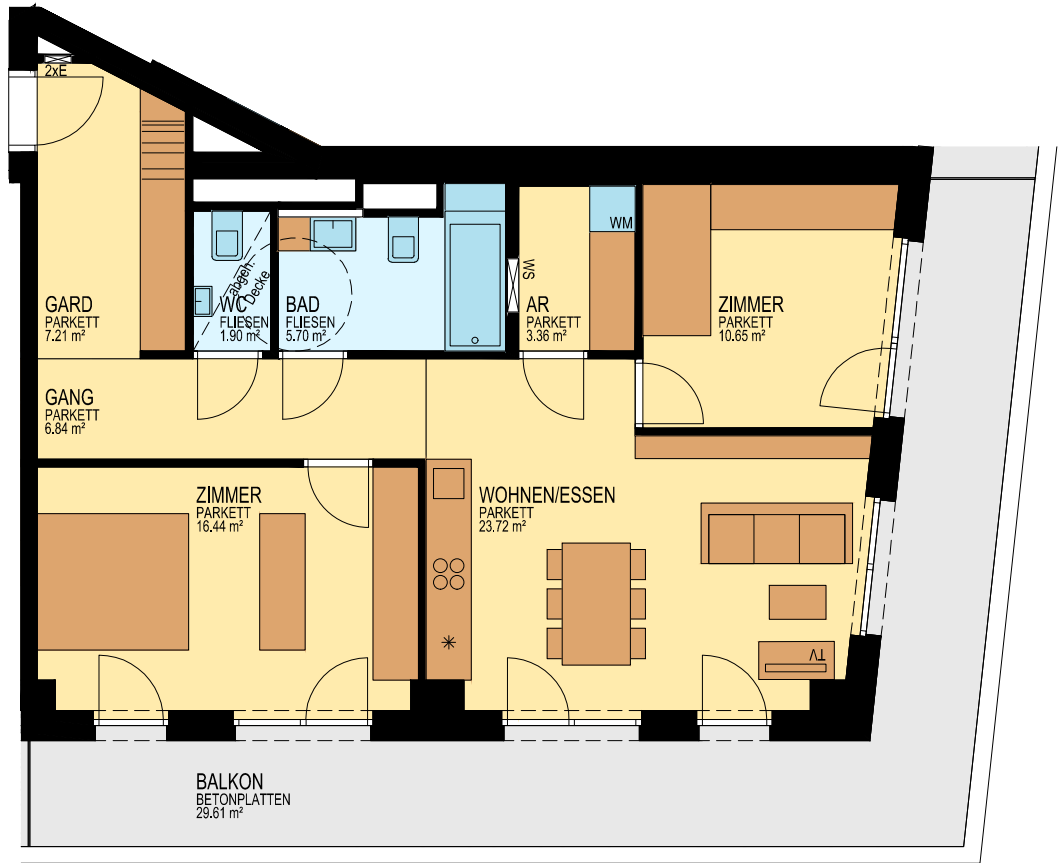




BRUCKNER TOWER

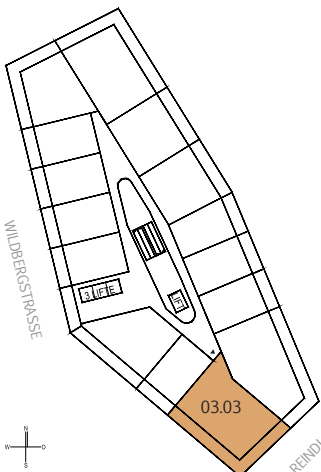


TOP 03.03 ▷

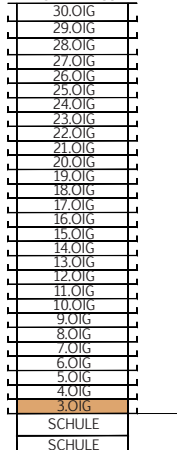


MST. 1:100

STOCKWERKS-KIZZE



DACHTERRASSE



WOHNUNG	TOP 03.03
FLÄCHE	75,81 m ²
BALKON	29,61 m ²
GESCHOSS:	03.OIG
NIVEAU:	+8,58 m